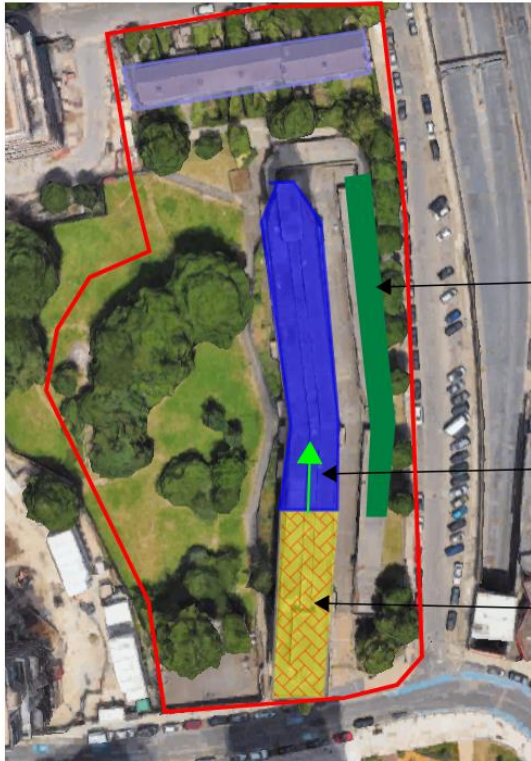


## Introduction

Welcome to the third edition of the newsletter for Blackwall Reach Phase 3, from Keltbray, the Principal Contractor. Our aim is to ensure you, and the local community are kept informed of forthcoming activities and progress throughout this enabling works phase of the development.



### HIGH REACH DEMOLITION PLANT OPERATIONS PLAN

PROTECTIVE  
DOUBLE-STACKED  
CONTAINERS

DIRECTION OF  
TRAVEL

OPERATING  
PLATFORM

## Project Overview

Blackwall Reach Ph3 is bounded by Robin Hood Lane, Poplar High Street, Robin Hood Garden and Woolmore Street. The current residential buildings will be deconstructed to make way for the final scheme which will provide high quality residential space.

## Project Status Update

The project is currently in the enabling phase with the following site activities ongoing:-

- First section of tower block dismantling is now complete;
- Civilisation and preparation of the ground to enable commencement of high-reach demolition machinery operations;
- Maintenance and observation of environmental monitoring instrumentation (dust, noise and vibration).

## Upcoming Works

- Continuation of structural demolition to the tower block will continue to May '25;
- Mobilisation of high-reach machinery is scheduled for Saturday 8<sup>th</sup> February; demo to commence 10<sup>th</sup> Feb for 12wks.
- Constant dust suppression equipment will be in operation.
- Environmental monitors will be closely monitored to ensure there are no exceedances.
- Demolition of terraced houses along Woolmore St. (May '25);
- Processing of and removal of demolition arisings from site.

#### Site Concerns/Issues Contact:

**Martin Webb**

**Project Manager**

07968 304219

[Martin.webb@keltbray.com](mailto:Martin.webb@keltbray.com)

**To opt out of all future communications** please email: [Martin.webb@keltbray.com](mailto:Martin.webb@keltbray.com)

#### Site working hours:

Monday to Friday

08:00 to 18:00

Saturday

08:00 to 13:00